

# Nagymihaly

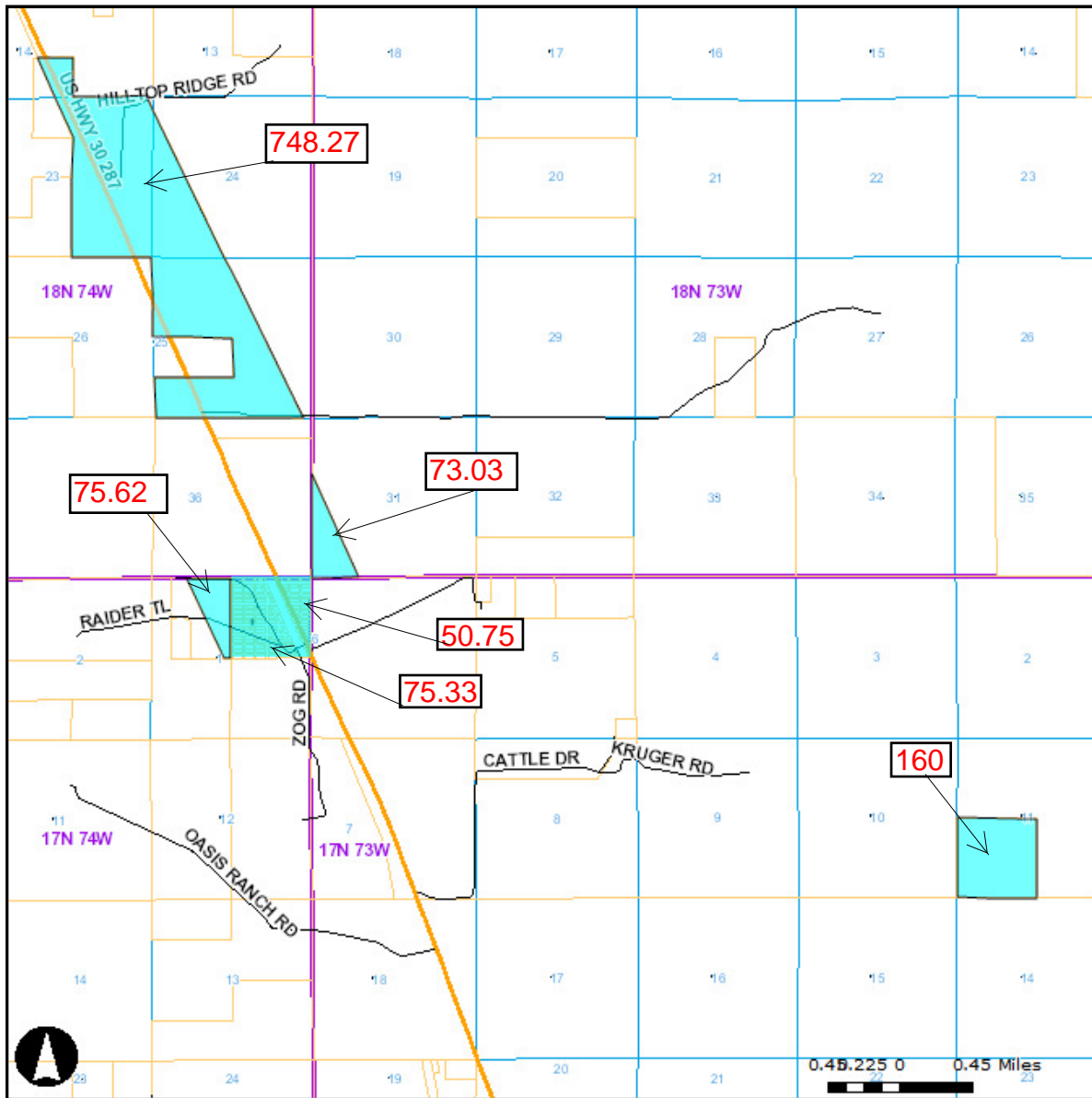
Laramie, Wyoming—Albany County



The Nagymihaly property is about 1,183 acres of land 15 miles north of Laramie on Highway 287. Although there are no buildings on the property, it can be built upon. The grass land is well known for outstanding gains on cattle, and hardiness in dry conditions. Solid turf on this property made up of Prairie June Grass, Blue Grama, Buffalograss, needle and thread, and reseeding of parts into wheat grass years ago provides a solid summer grass property. This property offers a great opportunity for summer grazing and upside potential as Laramie and Wyoming continue to grow.



# Albany County GIS Map



NAGYMIHALY, VERONICA (Ownership 2011)



NAGYMIHALY, VERONICA (Ownership 2011)



NAGYMIHALY, VERONICA (Ownership 2011)



NAGYMIHALY, VERONICA (Ownership 2011)



NAGYMIHALY, VERONICA (Ownership 2011)



Roads

—city

—county

—private

—state

County Boundary



Ownership 2011



Township & Range Lines



Section Lines







The Nagymihaly Property is being offered for sale at

\$425,000

Showings by Appointment only

**For more information, please contact:**

Tom Grieve

PO Box 240

Baggs, WY 82321

307.383.2125

[tom@ranchbrokers.com](mailto:tom@ranchbrokers.com)

**Western United Realty, LLC**



Wyoming-Laramie-Baggs

It's not about dirt for dollars, it's  
about families, heritage, integrity,  
hard work and honesty

**For more information, please contact:**

James Rinehart

PO Box 1130

Laramie, WY 82073

307.745.6024

[james@ranchbrokers.com](mailto:james@ranchbrokers.com)